

Excess wear on equipment

Robert Kuenzi Consulting
Sonnhaldenstrasse 2
6373 Ennetbuergen, Switzerland

Tel: +41 56 508 54 19
Email: robert.kuenzi@gmail.com
Website: www.rohne.ch

Is **frequent wear** at some specific locations a challenge?



Typical examples of frequent wear & consequences

- Conveyor discharge chutes.
- Vertical roller mill inlet chutes.
- Dedusting duct work.

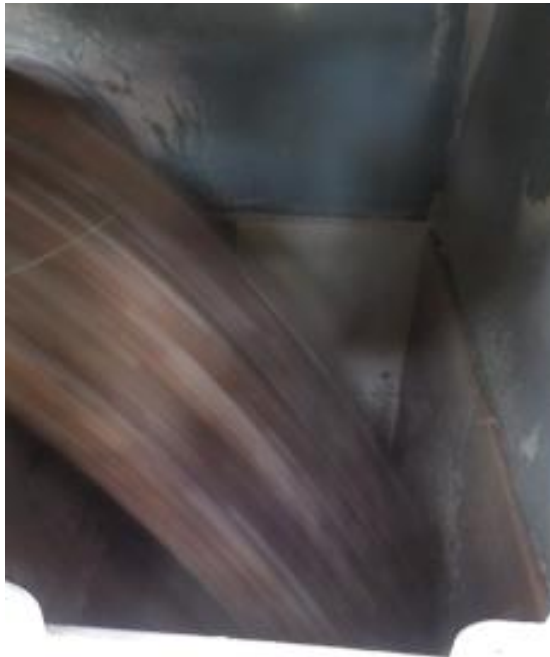


- This is causing high cleaning costs and wear at surrounding equipment.



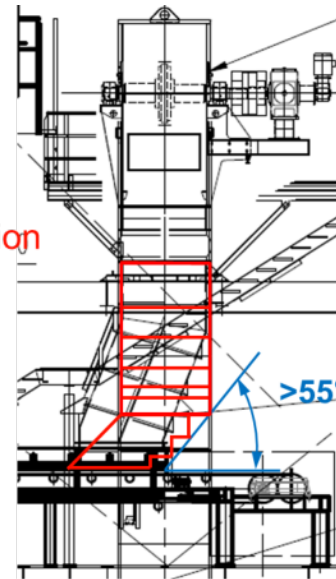
Basics: Excess wear on equipment

- Various (unnecessarily) wear is related to design deficiencies and could be fixed one-time rather than continuing over lifetime to do patch work...

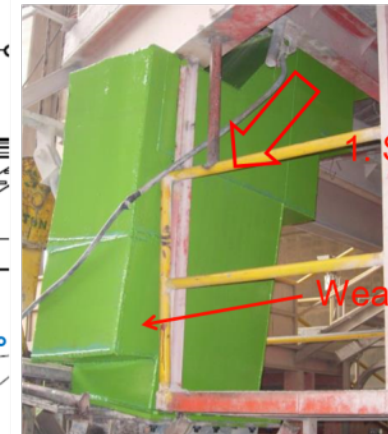


Wear protection

>55°



>55°



1. Step chute

Wear protection

2. Step chute

What do we offer?


Our competencies to reduce wear

- Finding smart solutions to reduce wear to a minimum.



- **Technical due diligence on site** with simple & hands-on visual reports with action list generation for follow-up and ease of tracking.

236 BC01: Feeding from BC4



- Problem
 - Unnecessary wear (and therewith spillage) at 236-BC4 feeding.
- Root cause
 - Design optimisations possible (for a dry material).
- Recommendation
 - Modify chute into a step chute design (horizontal step size ~180 mm)

©Robert Kuenzi 50