

Reduced production capacity

Robert Kuenzi Consulting
Sonnhaldenstrasse 2
6373 Ennetbuergen, Switzerland

Tel: +41 56 508 54 19
Email: robert.kuenzi@gmail.com
Website: www.rohne.ch

Are some of those examples your challenge?

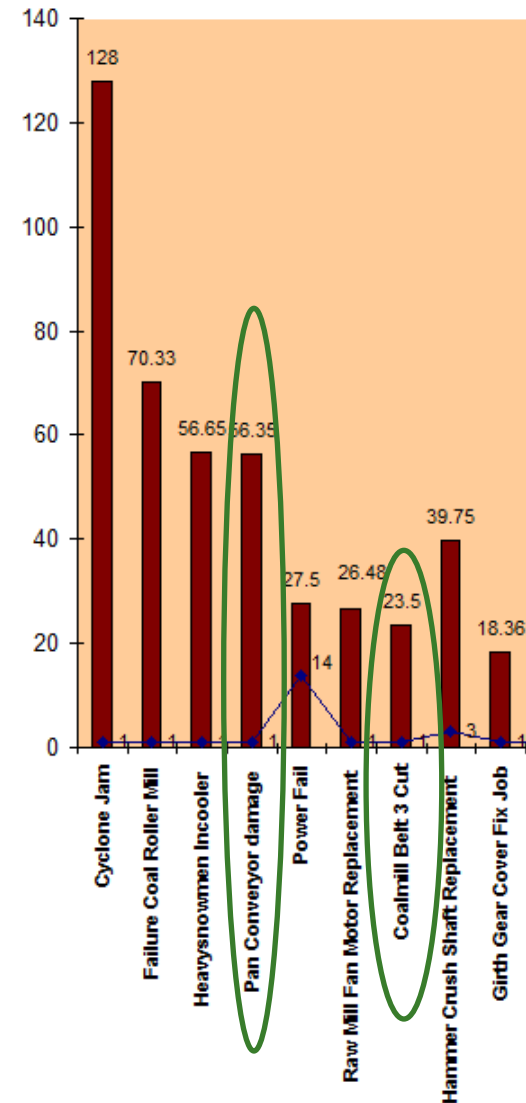
- Reduced raw mill capacity due to bin extraction issues.
- Reduced raw mill capacity due to heavy spillage generation at belt conveyors.
- Reduced cement mill capacity due to air slide restrictions.
- Reduced kiln production due to frequent and unexpected break downs of conveyors.
- ...

Deformed air
slide from
hammering



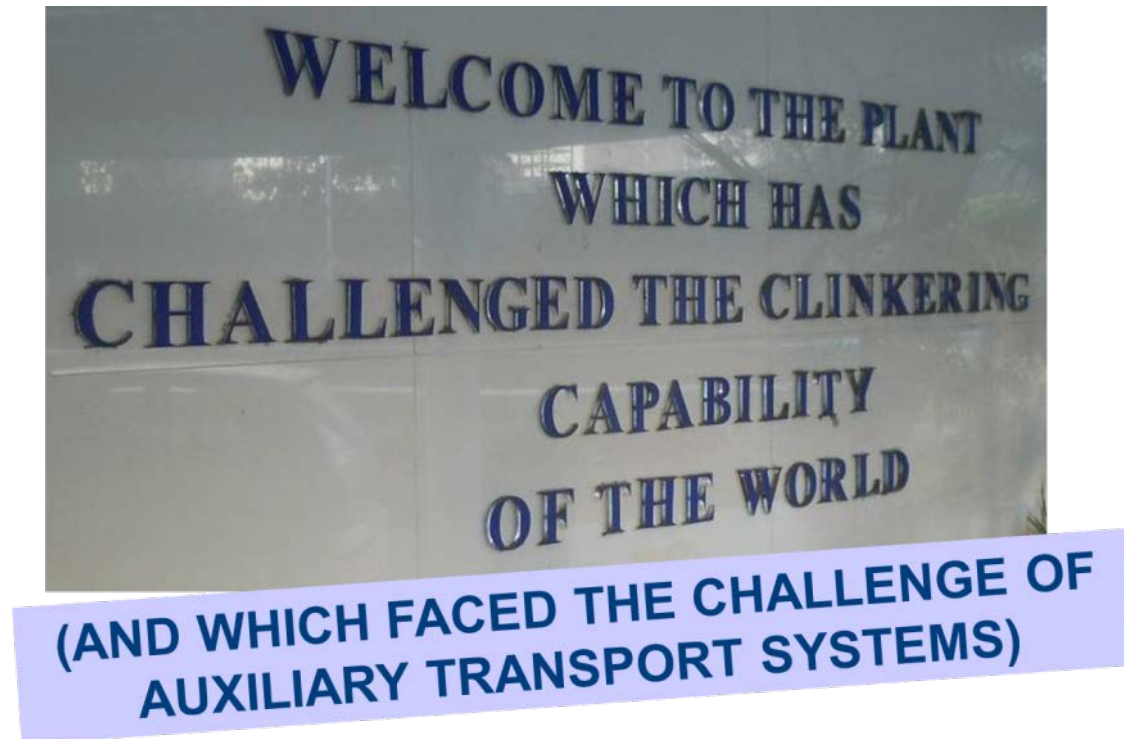
Economics of reduced production

- What is the price for:
 - ▶ Reduced grinding capacity?
 - ▶ Reduced kiln feed?
 - ▶ Or kiln stoppages?



Basics: Reduced production capacity

- Reduced production capacity is related to design, operation and/or maintenance deficiencies.
- Payback calculations (considering production losses) can justify additional investment/manpower if needed.



What do we offer?

Our competencies to stabilize production

- Identification of root causes for weak material handling (& dedusting) equipment.

- **Technical due diligence on site** with simple & hands-on visual reports with action list generation for follow-up and ease of tracking.

Summary: Quick win's

- Briquette dosing to clinker cooler:
 - Automated pneumatic transport of fines instead of manual briquettes handling.
- Mid kiln bypass transport:
 - Simple transport system with (existing) belt conveyors.
- Clinker unloading (to front loader):
 - A loading spout (with new bag filter) will give the difference.
- Clinker loading (to hopper):
 - Existing filter is oversized and needs to be reconditioned. Changing the overall duct work will help to avoid blockages.

©Robert Kuenzi

3