

# Reduced production capacity

**Robert Kuenzi Consulting**  
Sonnhaldenstrasse 2  
6373 Ennetbürgen, Switzerland

**Tel:** +41 56 508 54 19  
**Email:** [robert.kuenzi@gmail.com](mailto:robert.kuenzi@gmail.com)  
**Website:** [www.rohne.ch](http://www.rohne.ch)

## Are some of those examples your challenge?

---

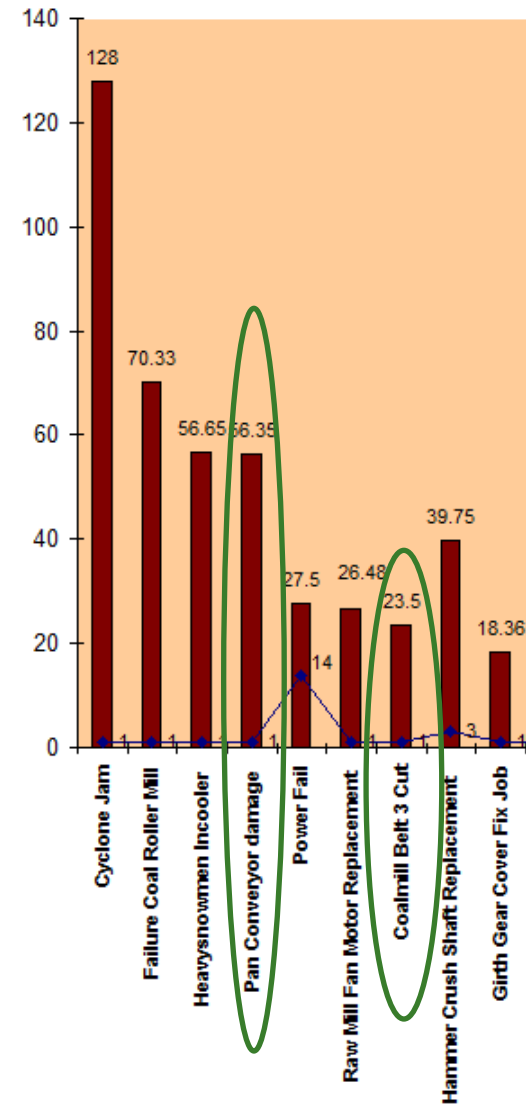
- Reduced raw mill capacity due to bin extraction issues.
- Reduced raw mill capacity due to heavy spillage generation at belt conveyors.
- Reduced cement mill capacity due to air slide restrictions.
- Reduced kiln production due to frequent and unexpected break downs of conveyors.
- ...

Deformed air  
slide from  
hammering



# Economics of reduced production

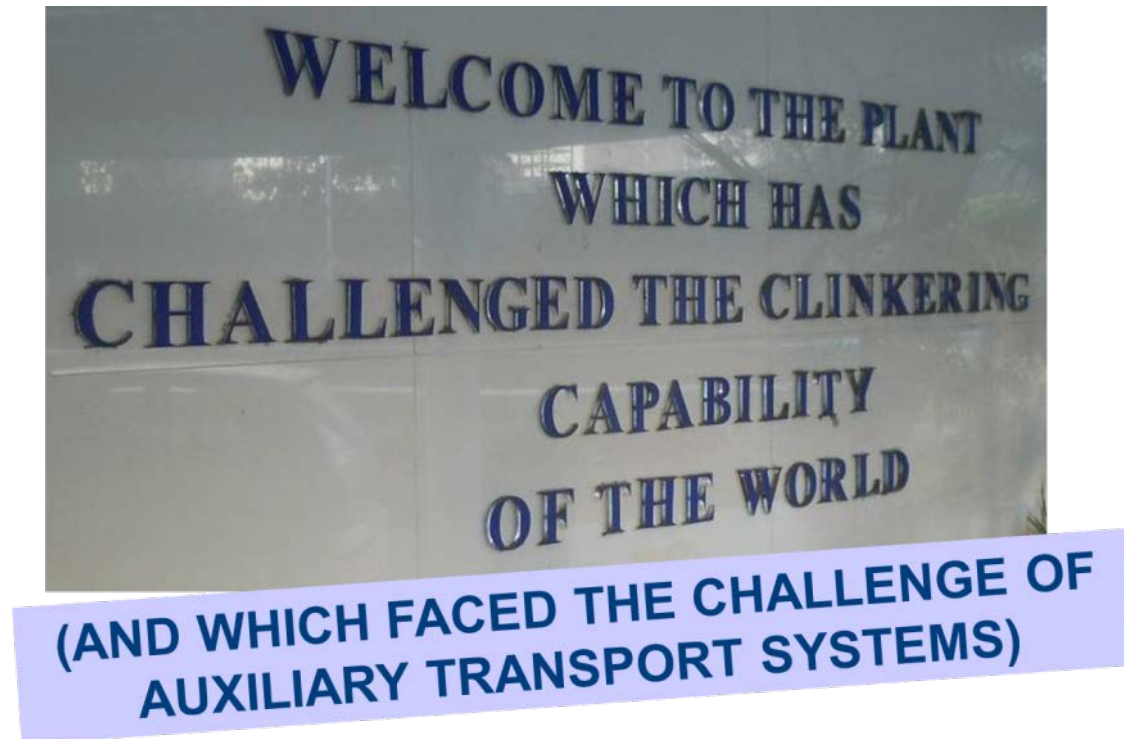
- What is the price for:
  - ▶ Reduced grinding capacity?
  - ▶ Reduced kiln feed?
  - ▶ Or kiln stoppages?



## Basics: Reduced production capacity

---

- Reduced production capacity is related to design, operation and/or maintenance deficiencies.
- Payback calculations (considering production losses) can justify additional investment/manpower if needed.



**What do we offer?**

# Our competencies to stabilize production

---

- Identification of root causes for weak material handling (& dedusting) equipment.
  
- **Technical due diligence on site** with simple & hands-on visual reports with action list generation for follow-up and ease of tracking.

## Summary: Quick win's

---

- Briquette dosing to clinker cooler:
  - Automated pneumatic transport of fines instead of manual briquettes handling.
- Mid kiln bypass transport:
  - Simple transport system with (existing) belt conveyors.
- Clinker unloading (to front loader):
  - A loading spout (with new bag filter) will give the difference.
- Clinker loading (to hopper):
  - Existing filter is oversized and needs to be reconditioned. Changing the overall duct work will help to avoid blockages.

©Robert Kuenzi

3