

# Excess wear on equipment

**Robert Kuenzi Consulting**  
Sonnhaldenstrasse 2  
6373 Ennetbürgen, Switzerland

**Tel:** +41 56 508 54 19  
**Email:** [robert.kuenzi@gmail.com](mailto:robert.kuenzi@gmail.com)  
**Website:** [www.rohne.ch](http://www.rohne.ch)

# Is **frequent wear** at some specific locations a challenge?



# Typical examples of frequent wear & consequences

- Conveyor discharge chutes.
- Vertical roller mill inlet chutes.
- Dedusting duct work.

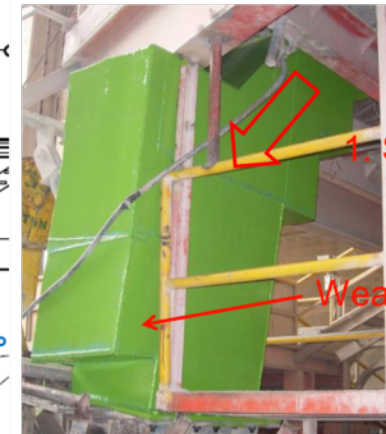
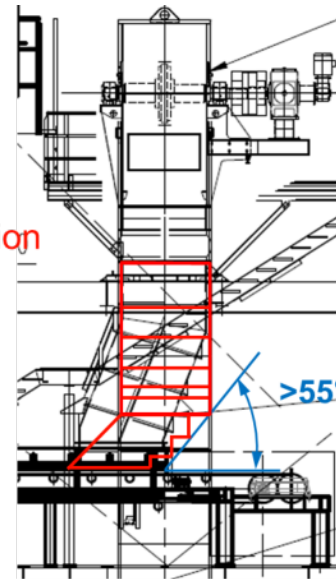
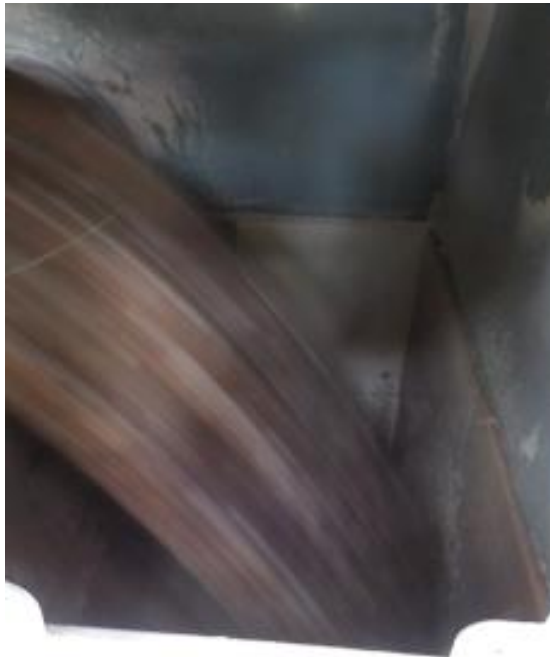


- This is causing high cleaning costs and wear at surrounding equipment.



# Basics: Excess wear on equipment

- Various (unnecessarily) wear is related to design deficiencies and could be fixed one-time rather than continuing over lifetime to do patch work...



**What do we offer?**




# Our competencies to reduce wear

- Finding smart solutions to reduce wear to a minimum.



- **Technical due diligence on site** with simple & hands-on visual reports with action list generation for follow-up and ease of tracking.

236 BC01: Feeding from BC4



- Problem
  - Unnecessary wear (and therewith spillage) at 236-BC4 feeding.
- Root cause
  - Design optimisations possible (for a dry material).
- Recommendation
  - Modify chute into a step chute design (horizontal step size ~180 mm)

©Robert Kuenzi 50